

E-mail: mahmood_altobje2000@yahoo.com

(2013 / 1 / 28 2012/ 8 / 28)

	5		45
13			
%6.66	3		%28.9
		.%6.66	3
		%5.88	%38.23
		%11.76	
%13.3	6		%32.32
			%11.11
		%66.7	
			. 40-30
			:

Dignosis of Systemic Lupus Erythematosis Disease and its Effect on some of the Variables in the Body

Mahmood A. Al-Tobje

Department of Biology

College of Science

University of Mosul

ABSTRACT

45 blood samples were collected from people suffering from different symptoms, with 5 samples of the healthy people as a control, were the presence of Antinuclear antibodies was screened using ELISA Technique as it appeared in 13 cases and by 28.9% of patients, while Anti Extracts nuclear antibodies appeared in 3 cases only and by 6.66%, compared with control samples which did not show any type of Autoantibodies, where the incidence of SLE in 3 patients and by 6.66%. As shown 38.23% of the patients increase for the ESR, and 5.88% of the patients decrease of white blood cells count, and decrease in platelet count in 11.76% of patients, and showed a decrease in the values of Haemoglobin with 32.32% of the patients, it also appeared an increase of the uric acid in 6 cases and 13.3% of the patients, and appeared 11.11% of the patients increase of the Creatinine, also showed SLE disease higher in the females was 66.7% compare with male and the same percentage showed infection age group between 30-40 years old.

Keywords: Autoimmune diseases, systemic lupus Erythematosis, Antinuclear antibody.

(SLE) Systemic Lupus Erythematosis

Autoimmune diseases

multisystem

45 15

90 70

.(National Insitutes of Helth, 2010)

.(Liva and Isenberg, 2001)

.....

.(Walpart, 2002)

ultra -

)

violet rays -

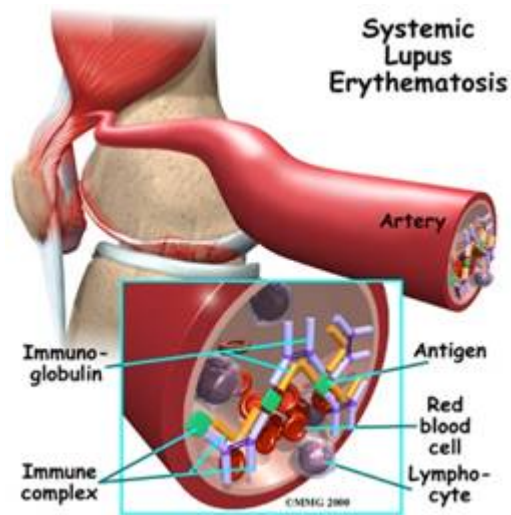
(

Autoantibody

.(1)

immune complexes

(Lupus Foundation of American, 2002)



:1

Arthralgia and Arthritis

pleuritis

malar and other skin rashes

renal and CNS involvement

or pericarditis

.(Tayloar, 2002) Hematologic Cytopenia



SLE



:2

.(Lupus Foundation of American, 2002)

.(Petri, 2010)

(50-12)

2012

2012

(50-17)

ELISA

-1

Human

Indirect

-2

Biosystem

.IF

- 3

-4

.....

5 45

%38.23 13
 %11.76 %5.88
 %32.32
 .(1)

:1

38.23	13	0- 20 /	ESR
5.88	2	4000-11000 /	WBC.c
11.76	4	150000-400000 /	PLT
32.32	11	11.5-18 100 /	HB

.(Micheal and Rosove, 2002)

.(Nojima *et al.*, 2001)

.(Micheal and Bosove, 2002)

.(Micheal and Rosove, 2002) .Haemolytic Anemia

2004

.(2004)

.(Parslow *et al.*, 2001)

%13.3

%11.1

45

5

:

:2

13.33	6	45	Ureic acid
11.11	5	45	

%28.9

45

13

%6.7

.(3)

:3

28.9	13	45	ANA
6.7	3	45	ENA
64.4	29	45	Neg. Antibodies

.....

%6.66

45

.(4)

:4

6,66%	3	45

.(Hughes, 2002)

%5

%95

.(Reichlin, 2001)

.Sm, sm/RNP, SS-A/Ro, SS-B/La,Jo-1

ENA

%94.5-60

(D'Cruz *et al.*, 2007)

%90-60

.(2004) Ro/RNP, SS-A/ Sm, sm

Sm

%94.5

.(Pan *et al.*,1998)

%40

RNP/ Sm

Ro/SS-A

(D'Cruz *et al.*, 2007)

(James *et al.*, 2003; Wahren *et al.*,1998;

%60

.Kassan, 2000)

%33.3 1

%66.7 2

.(5)

:5

66.7	2	3	
33.3	1	3	

(Fox *et al.*, 2012)

1:9

16 α Hydroxylate Estrogen

Oestriol

.(Hughes, 2000)

.(Hughes, 2000)

50-30

:

%66.7

40 -30

0.0	0	20-10
0.0	0	30-20
66.7	2	40-30
33.3	1	50-40

35-20

.(2004)

.(2004)

- D'Cruz, D.P.; Khamashta, M.A.; Hughes, G.R. (2007). Systemic lupus Erythematosus. *Lancet*. **17**; **369**(9561), 587-96.
- Fox, R.A.; Moore, P.M.; Isenberg, D.A. (2012). Neuroendocrine change in SLE and Sjogren syndrome. *Baillière's Clinical Rheumatology*. **12**(4), 551-744.
- Hughes, G. (2000). Lupus and Men. <http://www.lupus.org>.
- Hughes, G. (2002). Hughes syndrome. *Lupus Foundation of America*.
- James, M.; Gill, M.D. (2003). Diagnosis of Systemic Lupus Erythematosus. *Molec. Biol. Reports*, **1**; **68**(11), 2179-2187
- Kassan, M.D.; Stuarts, S. (2000). Sjogren syndrome and lupus. *Lupus Foundation of America*.
- Lupus Foundation of America, Inc. March (2002). Commonly asked question about lupus and causes, symptoms, testing, treatment. *Lupus Foundation of America*.
- Micheal, H.; Rosove, M.D. (2002). Blood disorders in lupus. *Lupus Foundation of America*.
- National Institutes of Health. (2010). Lupus: a patient care guide for nurses and other health professionals. *National Institute of Arthritis and Musculoskeletal and Skin Diseases*. **98**, 4262.
- Nojima, J.; Kuratsune, H.; Suehisa, E.; Futsukaichi, Y.; Yamanishi, H.; Machil, T.; Iwatani, Y.; Kanakura, Y. (2001). Association between the prevalence of antibodies to β 2-glycoprotein-1, prothrombin, protein C, protein S and annexin V in patient, with SLE and thrombotic and thrombocytopenic complications. *Clin. Chem.*, **47**,1008-15.

- Pan, L.T.; Tin, S.K.; Boey, M.L.; Fony, K.Y. (1998). The sensitivity and specificity of autoantibody to the sm antigen in the diagnostic of SLE. *Ann. Acad. Med. Singaphora*, **27**(1), 3-21.
- Parslow, T.G.; Stites, D.P.; Terr, A.I.; Imboden, J.B. (2001). "Medical Immunology". The McGraw-Hill Companies, 10th ed., pp. 481-495.
- Petri, M. (2010). Musculoskeletal complication of systemic lupus Erythematosus in hopkins lupus cohortianupdate. *Arthritis Care Res.*, **8**, 137-45.
- Reichlin, M.D. (2001). Laboratory tests used in diagnosis of lupus. <http://www.lupus.org>.
- Sliva, C.; Isenberg, M. (2001). Aetiology and pathology of SLE. *Hospital Pharmacist*, **7**, 133-42.
- Taylor, M. (2002). Pathogenic autoantibody in lupus patients. *Penn Medicine*. **5**, 41-47.
- Wahren, M.; Tengner, P.; Cunnarsson, I.; Lundberg, L.; Hedfors, E.; Ringertz, N.R.; pettersson, I. (1998). ss-A/Ro and ss-B/La antibody level variation in patient with sjogren syndrome and SLE. *J. Autoimmun*, **11**(1), 29-38.
- Walport, M.J. (2002). Complement and systemic lupus Erythromatosis. *Arthritis Research and Therapy*. 79.